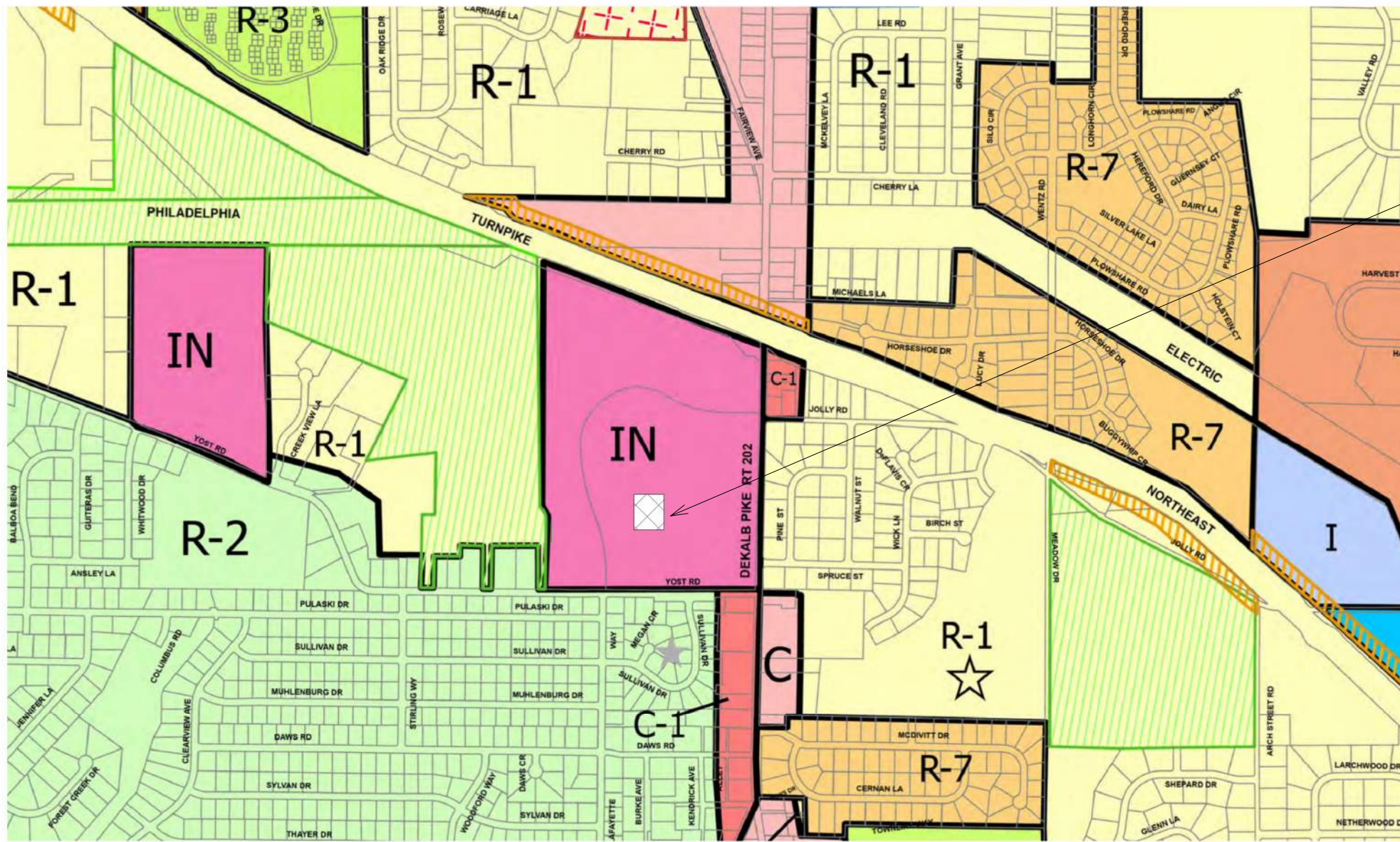




St. Helena Recreation Field Lighting Project





APPROXIMATE LOCATION OF THE NEW LIGHTS FOR THE EXISTING RECREATION FIELD. APPROXIMATELY 550 FT FROM RESIDENTIAL PROPERTY LINE

1 ZONING PLAN
1" = 200'-0"

| | | | | | | | |
|--|----------------------------------|--|----------------------------------|--|------------------------------|--|--|
| | R-1 Residential | | R-6 Agricultural/Residence | | R-E Research and Engineering | | Community Shopping Center Overlay District |
| | R-2 Residential | | R-7 Residential | | C Commercial | | Extended Daycare Overlay District |
| | R-3 Multifamily | | R-8 Residential | | C-1 Commercial | | Park and Recreation |
| | R-3A Low Intensity -Multifamily | | R-9 Residential | | S-C Shopping Center | | Off-Premises Advertising Sign Overlay District |
| | R-3B Low Intensity -Multifamily | | AR Administrative and Research | | I Limited Industrial | | Airport Overlay District |
| | R-4 Village Preservation | | AR-1 Administrative and Research | | IN Institutional | | ARD Age-Restricted Dwelling Overlay District |
| | R-5 Agricultural/Rural Residence | | VC Village Commercial | | | | |



LIGHTS ARE FARTHER THEN THE SPECIFIED MINIMUM DISTANCE OF 100 FT FROM A RESIDENTIAL PROPERTY LINE, STATED IN THE WHITPAIN TOWNSHIP ZONING ORDINANCE, ARTICLE XXIII, SECTION 160, WHICH WOULD HAVE LIMITED THE HEIGHT OF THE POLES.

EXISTING SPORTS FIELD

RED DASHED LINE INDICATES APPROXIMATE PROPERTY LINE

ST HELENAS SCHOOL

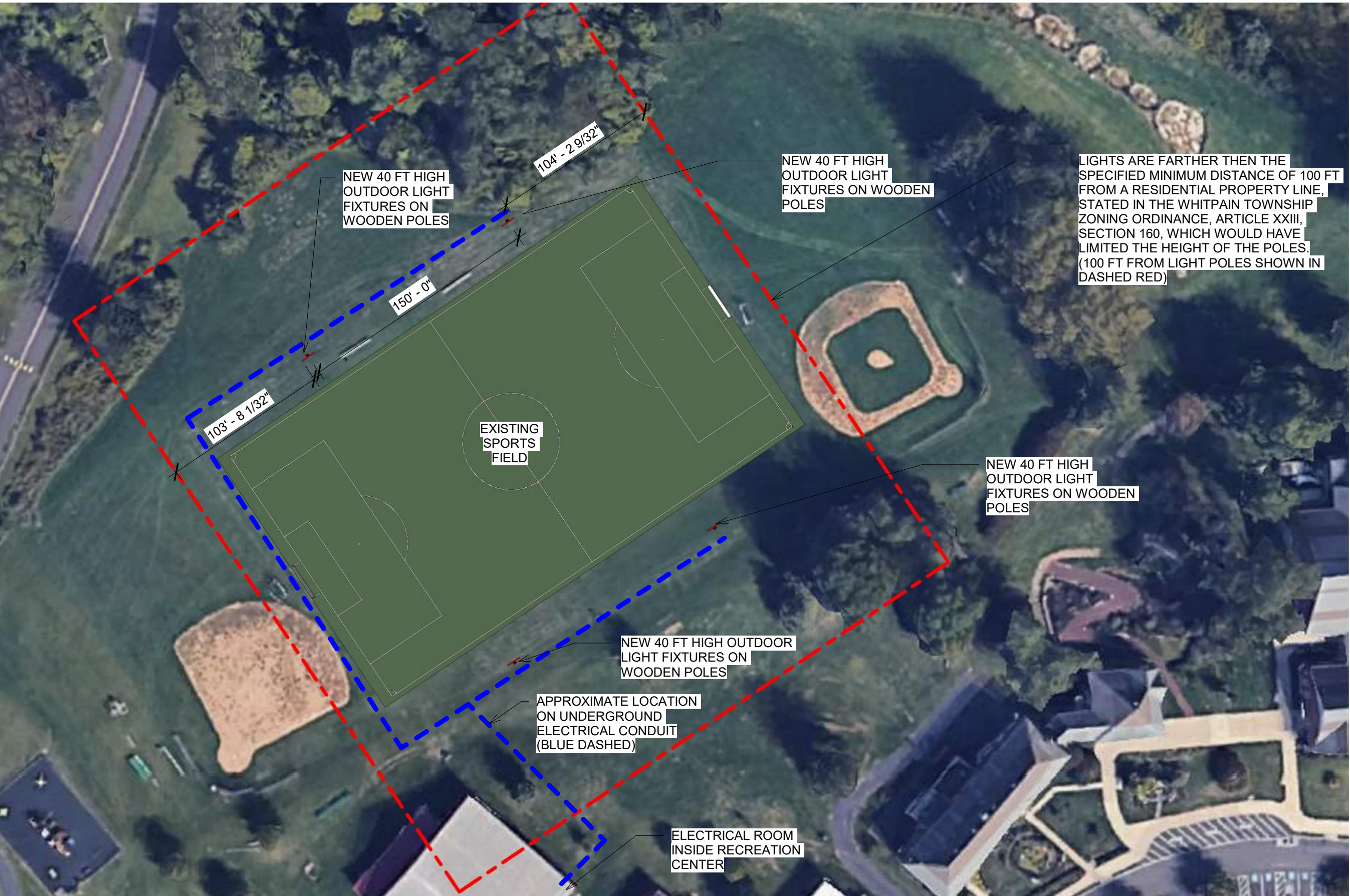
RECREATION CENTER / ELECTRICAL ROOM

351'

203'

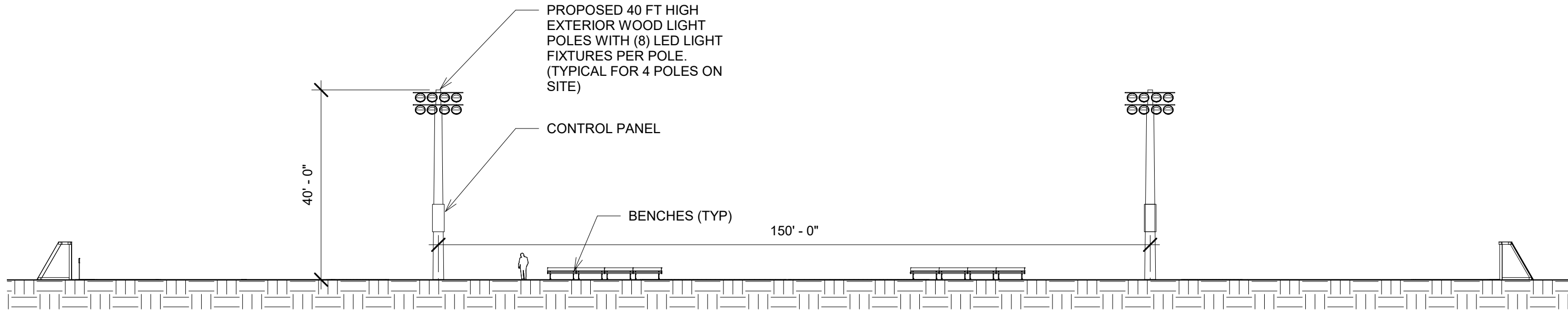
① HIGH LEVEL SITE PLAN
1" = 300'-0"

| |
|--|
| REFERENCE: |
| <u>CURRENT DESIGN COMPLINES WITH CURRENT WHITPAIN ZONING ORDINANCE.</u> |
| <ul style="list-style-type: none"> • ARTICLE XXIII FOR INSTITUTIONAL DISTRICTS (IN) • SECTION 160 - 160 (ADDITIONAL CONTROLS) • SECTION 160 - 220 (EXTERIOR LIGHTING) |



LIGHTS ARE FARTHER THEN THE SPECIFIED MINIMUM DISTANCE OF 100 FT FROM A RESIDENTIAL PROPERTY LINE, STATED IN THE WHITPAIN TOWNSHIP ZONING ORDINANCE, ARTICLE XXIII, SECTION 160, WHICH WOULD HAVE LIMITED THE HEIGHT OF THE POLES. (100 FT FROM LIGHT POLES SHOWN IN DASHED RED)

① SITE PLAN - RECREATION FIELD
1" = 60'-0"



1 SITE SECTION
3/64" = 1'-0"

SPORTS LIGHT (MSL01)



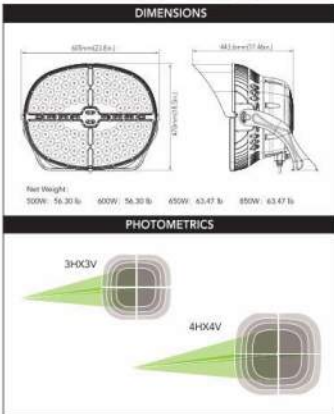
DESCRIPTION

By providing superior high output and high efficiency, the sports light series is the ideal solution for outdoor sports lighting such as municipal, school and semi-professional outdoor sports lighting. Dynamic thermal management design maximizes heat dissipation and significantly improves the life of luminaires. Built-in surge suppression adds an extra layer of protection to the luminaire driver. Versatile mounting bracket for hassle-free installation.



SPECIFICATION FEATURES

- Construction**
 - Sealed die-casting profile for outdoor applications.
 - Low profile, 3G vibration rated compact design minimizes wind load requirements.
 - Housing is completely sealed against moisture and environmental contaminants (IP65).
- Optics**
 - Available in NEMA 3h/3i, 4h/4iV distributors.
 - Light engines are available in standard 4000 K, 5000K and 5700 K (9/90/90 CR) configurations.
 - Scalable Lumen Packages from 68,160 to 118,000 Lumens.
 - Optics is precisely designed to shape the distribution, maximizing efficiency and application spacing.
- Electrical**
 - Universal 120-277 VAC or 277-480 VAC input voltage.
 - Standard with 0-10V dimming driver(s).
 - Built in surge suppression with max 20kV @ 120-277V/Max 40kV @ 277-480V.
 - THD < 20%.
 - Power Factor > 95%
- Ambient Temperature**
 - Ambient operating temperature -40C to 55C (-40 F to 131 F).
- Lifespan**
 - Estimated 100,000-hour LED lifespan based on IES LM-80 results and TM-21 calculations.
- Note**
 - Actual performance may differ as a result of end-user environment and application. All values are design or typical values, measured under laboratory conditions at 25 C (77 F). Specifications subject to change without notice.
- Certifications**
 - DesignLights Consortium™ Qualified.
 - UL, cUL, wet location listed.
 - Note: DesignLights Consortium™ Qualified and classified for DLC Standard refer to www.designlights.org for details.



PERFORMANCE DATA

| SYSTEM WATTS | VOLTAGE | NEMA | EPA | CR | LUMENS (4000K) | LPW (4000K) | LUMENS (5000K) | LPW (5000K) | LUMENS (5700K) | LPW (5700K) | Warranty |
|--------------|-------------------|-------|--------|----|----------------|-------------|----------------|-------------|----------------|-------------|----------|
| 500W | 120-277V/347-480V | 4h-4V | 1,2413 | 70 | 71000lm | 142 lm/W | 71000lm | 142 lm/W | 69000lm | 138 lm/W | 10 Years |
| | | 3h-3V | 1,2413 | 70 | 68160lm | 136 lm/W | 68160lm | 136 lm/W | 64200lm | 128 lm/W | |
| | | 4h-4V | 1,2413 | 70 | 84000lm | 168 lm/W | 84000lm | 168 lm/W | 82000lm | 164 lm/W | |
| 600W | 120-277V/347-480V | 4h-4V | 1,2413 | 70 | 80400lm | 134 lm/W | 80400lm | 134 lm/W | 78720lm | 131 lm/W | 5 Years |
| | | 3h-3V | 1,2413 | 70 | 76560lm | 127 lm/W | 76560lm | 127 lm/W | 73200lm | 122 lm/W | |
| | | 4h-4V | 1,2413 | 70 | 91000lm | 151 lm/W | 91000lm | 151 lm/W | 88000lm | 135 lm/W | |
| 650W | 277-480V | 4h-4V | 1,2413 | 70 | 87360lm | 134 lm/W | 87360lm | 134 lm/W | 84800lm | 130 lm/W | 10 Years |
| | | 3h-3V | 1,2413 | 70 | 83520lm | 129 lm/W | 83520lm | 129 lm/W | 80000lm | 125 lm/W | |
| | | 4h-4V | 1,2413 | 70 | 118000lm | 181 lm/W | 118000lm | 181 lm/W | 115000lm | 152 lm/W | |
| 850W | 277-480V | 4h-4V | 1,2413 | 70 | 113280lm | 133 lm/W | 113280lm | 133 lm/W | 107520lm | 126 lm/W | 10 Years |
| | | 3h-3V | 1,2413 | 70 | 109440lm | 129 lm/W | 109440lm | 129 lm/W | 103760lm | 122 lm/W | |
| | | 4h-4V | 1,2413 | 70 | 143000lm | 168 lm/W | 143000lm | 168 lm/W | 138000lm | 158 lm/W | |

ELECTRICAL DATA

| Number Of Drivers | Driver Current (mA) | Nominal Power (W) | INPUT VOLTAGE (V) | CURRENT (Amps) |
|-------------------|---------------------|-------------------|-------------------|----------------|
| 1 | 4800 | 500 | 120 | 4.17 |
| | | 600 | 208 | 2.40 |
| | | 650 | 240 | 2.08 |
| | | 500 | 277 | 1.81 |
| | | 500 | 347 | 1.44 |
| | | 500 | 480 | 1.04 |
| 1 | 4650 | 600 | 120 | 5.00 |
| | | 650 | 208 | 2.88 |
| | | 650 | 240 | 2.50 |
| | | 600 | 277 | 2.17 |
| | | 600 | 347 | 1.73 |
| | | 600 | 480 | 1.25 |
| 1 | 5200 | 650 | 277 | 2.35 |
| | | 650 | 347 | 1.87 |
| | | 650 | 480 | 1.35 |
| | | 850 | 277 | 3.07 |
| 1 | 5200 | 850 | 347 | 2.45 |
| | | 850 | 480 | 1.77 |
| | | 850 | 480 | 1.77 |

ORDERING GUIDE

Example: MSL01500W27VXXXXXXYY

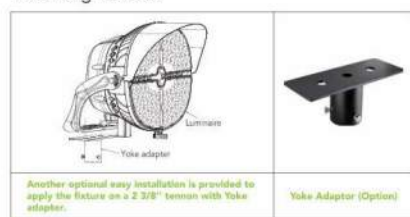
| Fixture Type | Wattage | Voltage | CCT | Finish | Nema | Mounting Option | Integrated Control | Control Code |
|---------------------|----------------------------------|------------------------------|------------------------|--------|-----------|-----------------|---------------------------|--------------|
| MSL01 | 500 600W | 27V 120-277V | 40K 4000K | Black | 844 4h-4V | Y | C With Integrated Control | Blank |
| Sports light series | 600 600W 650 650W 850 850W | 48V 347-480V 48V 277-480V | 50K 5000K 57K 5700K | Black | 844 4h-4V | Y | Blank | Alphanumeric |

Note: 1. 650W, 850W only suitable for 277-480V input.
2. A 5-year warranty for 600W and other power have a 10-year warranty.

ACCESSORIES



Mounting Bracket



NOTES:

LED LIGHT FIXTURES

- SPORTS LIGHT (MSL01), 500W, 27V (120-277V).
- CORRELATED COLOR TEMPERATURE (CCT = 50K (5000K)
- COLOR - BLACK WITH SHIELDS AS REQUIRED
- 30-40 FOOTCANDLES AT PLAYING SURFACE



Warehouse-Lighting.com
2750 South 163rd St
New Berlin, WI 53151

Warehouse-Lighting.com
Phone: 888-454-4480
info@warehouse-lighting.com